

Royal Liverpool Emergency Department Monthly Bulletin: January to December 2011

This bulletin provides a breakdown of all injury attendances at the Royal Liverpool Emergency Department (ED) between January and December 2011.

Between January and December 2011 there were 31,255 injury attendances, peaking in January (n=3,341), with December (n=2,009) having the fewest. **Figure 1** gives a breakdown of monthly injury attendances by gender, illustrating that for all months there were more male (54%) injury attendances than female presenting at the Royal Liverpool ED.

The majority of injury attendances were made by people over the age of 14 years, with the highest proportion (41%) being made by 30-59 year olds (**Figure 2**). The low number of injury attendances under the age of 15 presenting at the Royal Liverpool ED could possibly be due to the close proximity of a local children's ED (Alder Hey).

Table 1 details the injury group of attendees. The majority (69%) of injury attendances have been classified as other injury. This category includes injuries such as head injuries and arm injuries, for example. Over seven in ten (71%) injuries occurred in the home (**Table 2**).

The disposal method of attendees can give an indication of the severity of the injury sustained. Nearly four in ten (39%) injury attendances were discharged from the ED and over three in ten (31%) were admitted to hospital (**Table 3**).

Assault questionnaire*

The Royal Liverpool ED collects additional information on assault attendances and a summary of this data is provided in this report. More detailed information collected by staff at the Royal Liverpool ED on issues such as the specific location of assault (e.g. pub name/street), is provided by TIIG to local agencies such as Citysafe in a separate report to the one produced here.

There were 2,112 assault attendees presenting at the Royal Liverpool ED between January and December 2011; these were mainly male (76%) and 42% were aged between 15-29 years.

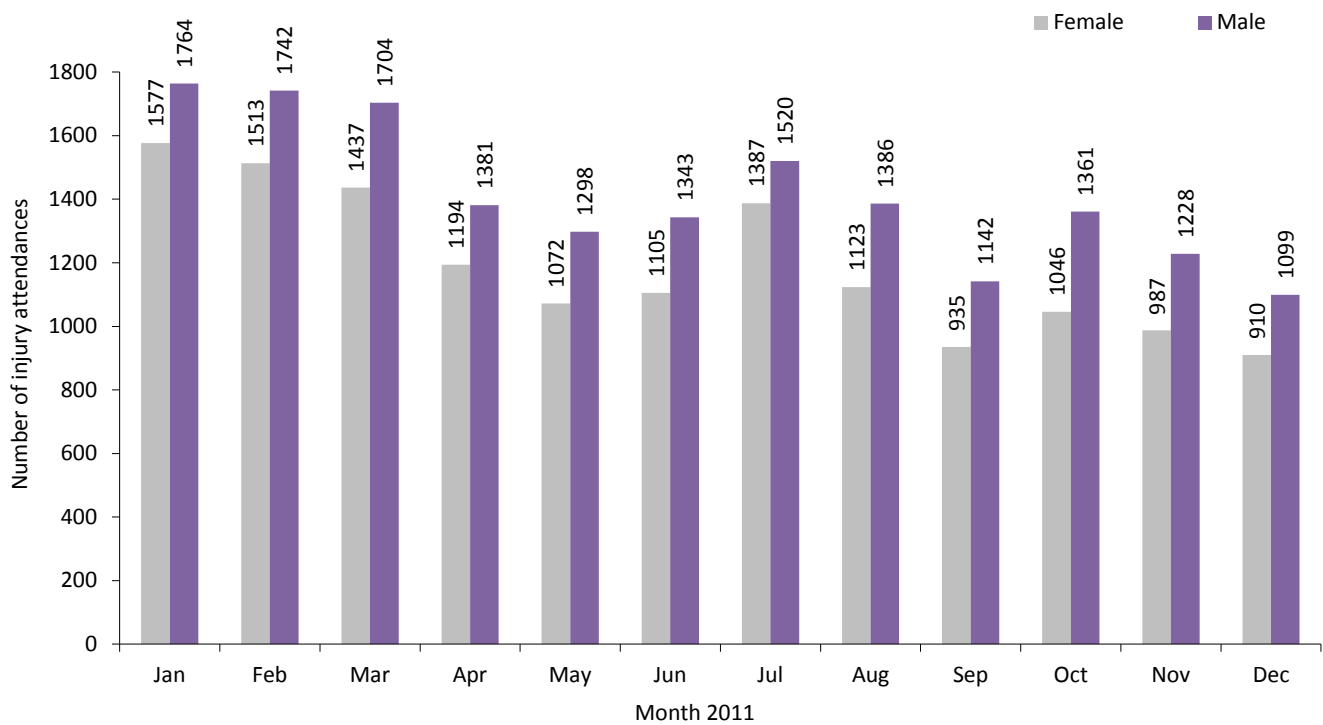
Table 4 shows that where data was collected, 50% of assault attendances had consumed alcohol within three hours prior to their attack. Three quarters (77%) of all assault locations were unknown during January to December 2011. Of those known, over half (57%) occurred on the street (**Table 5**).

Table 6 shows that the relationship between assault attendees and those involved in the assault was unknown in the majority (79%) of incidents. Where data was collected, 70% of assault patients had been assaulted by a stranger.

Table 7 shows the weapon used in the assaults. Of those with a known weapon type, 75% were attacked with a body part, such as a fist, 6% with a knife and 5% with a blunt object.

* Please note that although a patient may complete the assault patient questionnaire data may not be provided for each question as the patient can refuse or be unable to answer particular questions. Data provided in the following analyses represent those patients who completed each question.

Figure 1: Gender of injury attendances by month, January to December 2011*



*Please note one attendance was reported as gender unknown and is not included in the chart.

Figure 2: Age group of injury attendances by month, January to December 2011

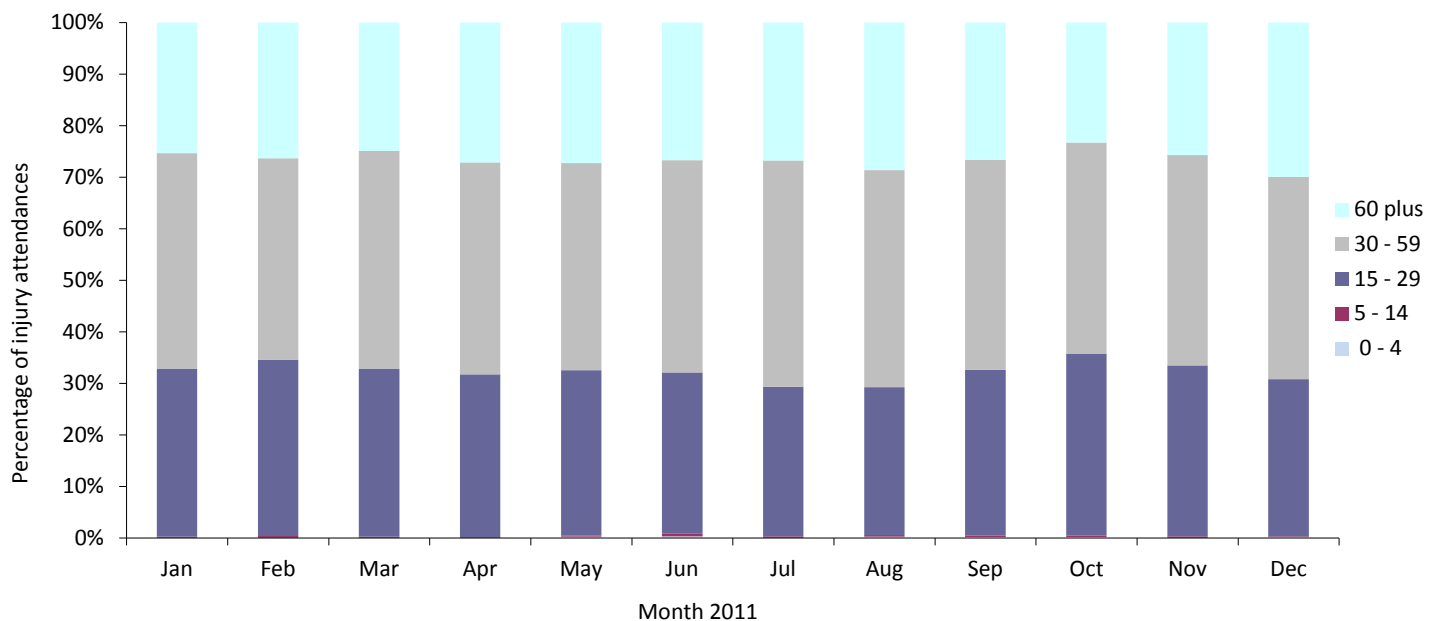


Table 1: Injury attendances by injury group and month, January to December 2011¹

Injury group	Jan	Feb	Mar	Apr	May	Jun	Jul	Aug	Sep	Oct	Nov	Dec	Total	%
Other injury	2570	2510	2380	1781	1627	1681	2065	1648	1217	1586	1458	1153	21676	69
Fall	322	271	275	319	293	337	331	332	340	266	291	369	3746	12
Assault	190	188	165	184	156	162	197	203	160	202	143	162	2112	7
Overdose	114	110	105	103	104	92	110	134	118	120	106	116	1332	4
Sport injury	53	79	110	79	80	72	101	97	118	132	115	139	1175	4
Road traffic collision	45	60	63	60	59	54	56	54	67	49	66	38	671	2
Self-harm	26	17	24	26	24	25	26	18	25	36	15	20	282	1
Burn	21	20	19	24	27	25	21	23	32	16	21	12	261	1
Total	3341	3255	3141	2576	2370	2448	2907	2509	2077	2407	2215	2009	31255	100

¹ Please note that, from April 2011, changes have been made in the way data is collected by the ED. It appears that more attendances are being coded with an injury group 'other than above', resulting in these cases being classed as non trauma and therefore not included in these analyses.

Table 2: Injury attendances by location of incident and month, January to December 2011

Location	Jan	Feb	Mar	Apr	May	Jun	Jul	Aug	Sep	Oct	Nov	Dec	Total	%
Home	2588	2546	2336	1765	1577	1634	2126	1799	1354	1594	1527	1292	22138	71
Public place	386	373	384	439	424	386	385	363	379	383	276	328	4506	14
Other	314	269	326	329	308	373	338	272	270	354	321	339	3813	12
Work	35	33	60	25	37	40	41	50	43	45	56	38	503	2
Leisure facility	18	34	35	18	24	15	17	25	31	31	35	12	295	1
Total	3341	3255	3141	2576	2370	2448	2907	2509	2077	2407	2215	2009	31255	100

Table 3: Injury attendances by disposal method and month, January to December 2011^{2 3 4}

Disposal	Jan	Feb	Mar	Apr	May	Jun	Jul	Aug	Sep	Oct	Nov	Dec	Total	%
Discharged	1129	1134	1230	1030	949	1072	1144	956	770	965	938	804	12121	39
Admitted	1082	1069	966	745	721	723	821	807	653	721	651	668	9627	31
Discharge - follow-up by GP	380	340	274	251	227	169	301	206	161	177	159	120	2765	9
Left - before being treated	219	208	169	216	109	58	77	67	106	106	84	91	1510	5
Referred to fracture clinic	203	177	177	121	103	97	123	115	84	92	97	72	1461	5
Referred to other HCP	113	129	137	89	73	103	132	112	88	117	103	69	1265	4
Left - refused treatment	13	12	17	14	71	115	138	121	105	105	82	89	882	3
Referred to ED clinic	54	66	57	33	36	42	81	40	46	52	41	36	584	2
Referred to OPD clinic	85	72	59	37	38	41	46	42	28	33	35	35	551	2
Transfer to other HCP	34	29	34	30	28	8	9	12	15	16	11	9	235	1
Other	22	14	13	7	13	13	33	23	18	16	12	10	194	1
Patient died in department	<7	<6	***	***	***	<6	***	<9	***	<8	***	<7	51	0
Restored to ward	***	***	5	***	***	***	***	***	***	***	***	***	9	0
Total	3341	3255	3141	2576	2370	2448	2907	2509	2077	2407	2215	2009	31255	100

Table 4: Assault attendees' alcohol consumption within three hours prior to the assault by month, January to December 2011

Alcohol consumption	Jan	Feb	Mar	Apr	May	Jun	Jul	Aug	Sep	Oct	Nov	Dec	Total	%
Unknown	143	124	114	128	119	137	148	145	127	169	135	141	1630	77
Yes	30	37	30	32	21	8	9	31	15	18	***	<8	241	11
No	12	21	19	16	<9	12	35	20	14	<8	***	13	182	9
Unable to answer	***	***	***	<6	7	***	***	***	***	5	***	***	41	2
Refused to answer	***	***	***	***	***	***	***	***	***	***	***	***	18	1
Total	190	188	165	184	156	162	197	203	160	202	143	162	2112	100

Table 5: Assault attendances by location of incident and month, January to December 2011

Assault location	Jan	Feb	Mar	Apr	May	Jun	Jul	Aug	Sep	Oct	Nov	Dec	Total	%
Unknown	143	124	114	128	120	138	148	145	127	169	135	141	1632	77
Street	27	31	27	31	24	18	25	29	24	13	6	8	263	12
Bar/pub	9	13	7	7	***	***	***	5	***	5	***	***	55	3
Your home	6	***	6	***	5	***	13	***	***	***	***	5	48	2
Club	***	***	***	***	***	***	***	10	***	5	***	***	29	1
Other	***	6	***	***	***	***	***	***	***	***	***	***	28	1
Someone else's home	***	***	***	***	***	***	***	***	***	6	***	***	27	1
Refused to answer	***	***	***	***	***	***	***	***	***	***	***	***	12	1
Workplace	***	***	***	***	***	***	***	***	***	***	***	***	10	0
Unable to answer	***	***	***	***	***	***	***	***	***	***	***	***	8	0
Total	190	188	165	184	156	162	197	203	160	202	143	162	2112	100

² Please note that all numbers less than five have been suppressed in line with patient confidentiality and if there is only one number less than five in a category then two numbers will be suppressed at the next level (e.g. <6) in order to prevent back calculations from totals.

³ OPD= out-patient department, HCP= health care provider, GP= General Practitioner.

⁴ Please note percentages might not add to one hundred due to rounding.

Table 6: Assault attendances by relationship with attacker and month, January to December 2011

Relationship with attacker	Jan	Feb	Mar	Apr	May	Jun	Jul	Aug	Sep	Oct	Nov	Dec	Total	%
Unknown	147	127	117	134	121	140	151	150	129	172	137	143	1668	79
Stranger	25	52	32	32	25	16	26	34	20	13	***	<12	289	14
Acquaintance/friend	***	***	5	10	***	***	9	***	***	6	***	***	51	2
Partner	***	***	***	***	***	***	***	***	***	***	***	***	29	1
Unable to answer	***	***	***	***	***	***	***	***	***	5	***	***	24	1
Bouncer	5	***	***	***	***	***	***	5	***	***	***	***	19	1
Family member	***	***	***	***	***	***	5	***	***	***	***	***	10	0
Refused to answer	***	***	***	***	***	***	***	***	***	***	***	***	10	0
Ex-partner	***	***	***	***	***	***	***	***	***	***	***	***	6	0
Work mate/colleague	***	***	***	***	***	***	***	***	***	***	***	***	1	0
Police	***	***	***	***	***	***	***	***	***	***	***	***	***	0
Work client/customer	***	***	***	***	***	***	***	***	***	***	***	***	***	0
Total	190	188	165	184	156	162	197	203	160	202	143	162	2112	100

Table 7: Assault attendances by method of attack and month, January to December 2011

Method of attack	Jan	Feb	Mar	Apr	May	Jun	Jul	Aug	Sep	Oct	Nov	Dec	Total	%
Unknown	146	126	114	129	119	139	148	148	128	172	136	142	1647	78
Body part (e.g. fist)	31	37	37	38	18	16	39	37	22	<16	***	17	310	15
Unable to answer	***	***	***	***	7	***	***	7	***	6	***	***	42	2
Other	***	9	***	***	***	***	6	***	***	***	***	***	35	2
Knife	***	***	***	***	5	***	***	***	***	***	***	***	24	1
Blunt object	***	***	***	***	***	***	***	***	***	***	***	***	19	1
Bottle	***	5	***	***	***	***	***	***	***	***	***	***	15	1
Glass	***	***	***	***	***	***	***	***	***	***	***	***	11	1
Refused to answer	***	***	***	***	***	***	***	***	***	***	***	***	9	0
Total	190	188	165	184	156	162	197	203	160	202	143	162	2112	100

Published March 2012

Nicola Davenport (Merseyside and Cheshire TIIG officer)
 Centre for Public Health, Liverpool John Moores University,
 2nd Floor, Henry Cotton Building, 15-21 Webster Street, Liverpool, L3 2ET
 Tel: 0151 231 4500, Email: N.M.Davenport@ljmu.ac.uk

Website: www.tiig.info (please note data requests should be made through the website)